

STARVINE* (NUN 09416 TOF)

June 26, 2023

Variety Description

- Tomato on the vine, middle
- Open and vigorous plant
- For lit and non lit cultivations
- Average fruit weight 110 – 120 g
- For yearround cultivation

Key Benefits

- Good level of ToBRFV resistance in field trials
- Deep red and shiny color fruits
- Very good cluster presentation
- Pruning on 6 fruits
- Flat cluster

Growing Calendar

	J	F	M	A	M	J	J	A	S	O	N	D
Planting												
Harvesting												

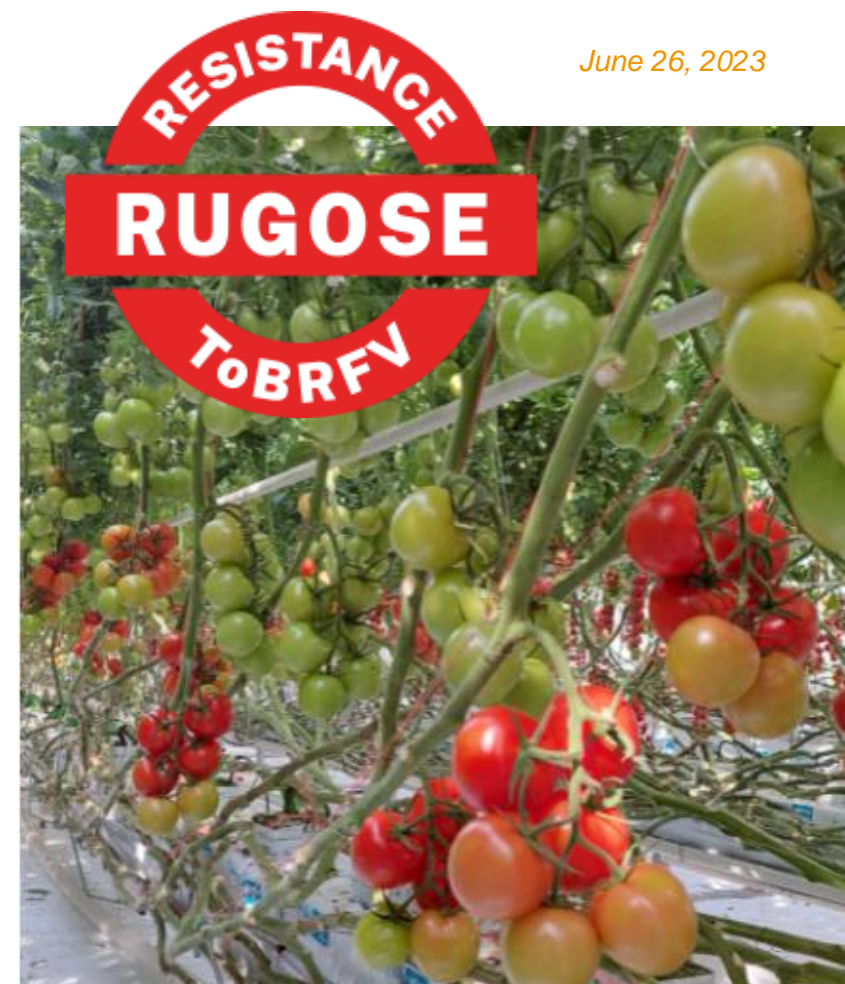
Growing Concept

- Generative steering needed
- Work on setting
- Rootstock: Maxifort / Kaiser / DRO 141

Resistances

- HR: ToMV:0-2; Fol:0-1EU; For; Pf: A-E; Va:0EU
- ToBRFV
- IR: On

For detailed information on disease resistances refer to International Seed Federation (ISF) www.worldseed.org



For more information, please contact your local sales specialist or Customer Service.

Erwin de Kok, +31 6 1442 7646

E-mail: erwin.dekok@vegetableseeds.basf.com

*under application for inclusion in the EC Common Catalogue of Vegetable Varieties

Information provided by BASF in any form whatsoever is without guarantee. Descriptions, recommendations, and illustrations are based as closely as possible on experiences in tests and in practice. However, BASF does not accept any liability whatsoever on the basis of such information for different results in the cultivated product. The buyer itself must determine whether the goods and information are suitable for the intended growth and/or can be used in the local conditions.
All varieties shown were grown under favourable conditions. Identical results are not guaranteed nor implied for all growing conditions.

© BASF 2023. All (property) rights are reserved by BASF or its affiliates on any matter presented or depicted herein. Reproduction and distribution of the presentation without written permission is prohibited.

BASF
We create chemistry

nunhems